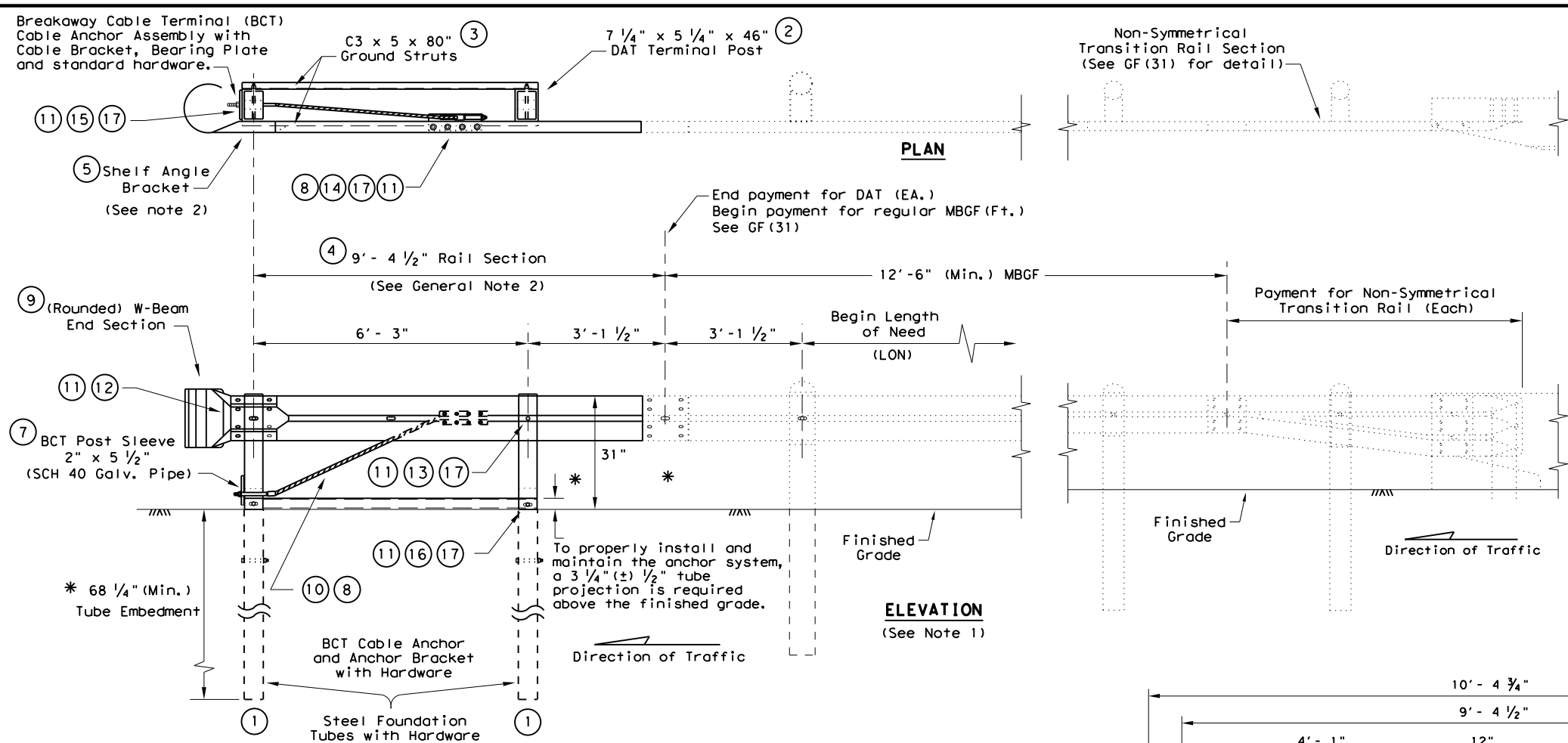
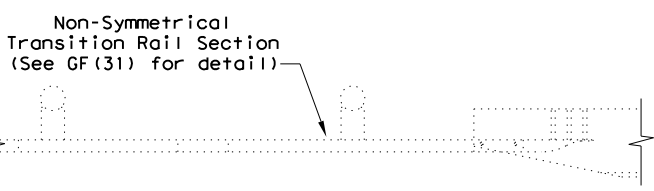


DISCLAIMER: The use of this standard is governed by the "Texas Engineering Practice Act". No warranty of any kind is made by TxDOT for any purpose whatsoever. TxDOT assumes no responsibility for the conversion of this standard to other formats or for incorrect results or damages resulting from its use.

DATE: 9/28/2018
 FILE: \\txdot\projectwiseonline.com\txdot3\Documents\10 - TYL\Design Projects\069702039\4 - Design\Plan Set\3. Roadway\Standards\GF (31)\DAT-14



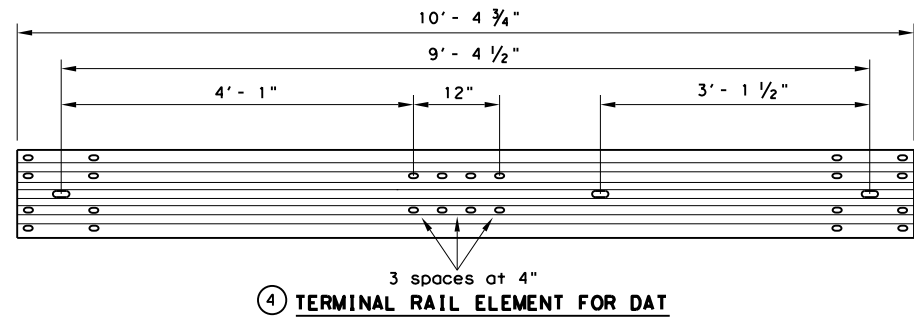
DOWNSTREAM ANCHOR TERMINAL (DAT)
 Only for downstream use, when located outside the horizontal clearance area of opposing traffic.



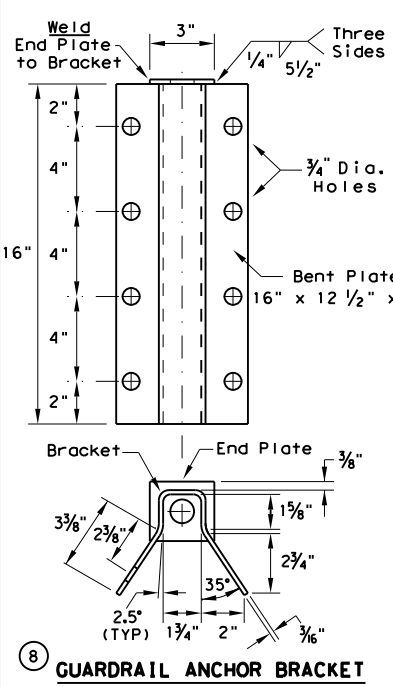
GENERAL NOTES

1. The detail shown is the minimum Length of Need (LON) for a DAT connected to a concrete rail.
2. The rail section at the end post is supported by the Shelf Angle Bracket. The rail element is not attached to the end post.
3. The foundation tubes shall not project more than 3 3/4" above the finished grade.
4. All hardware for DAT shall be ASTM A307 unless otherwise shown.
5. Refer to GF(31) sheet for terminal connection details.

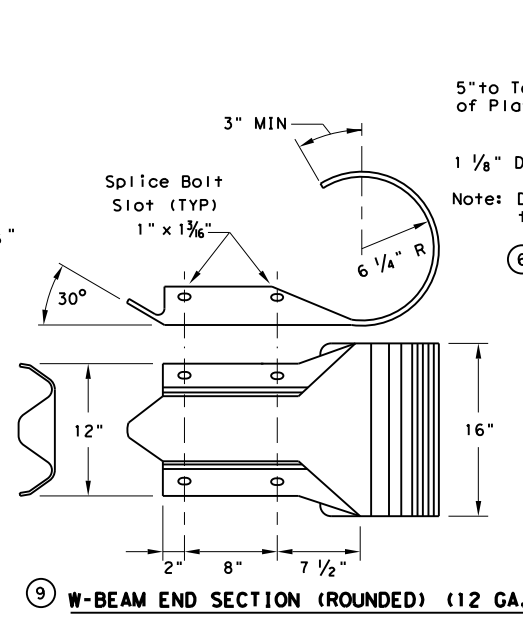
MOW STRIP INSTALLATION
 If a mow strip is required with the DAT installation the leave-out area around the steel foundation tubes and the two channel struts may be omitted. This will require a full pour at the foundation tubes.



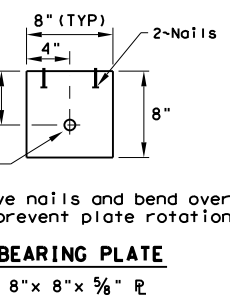
④ TERMINAL RAIL ELEMENT FOR DAT



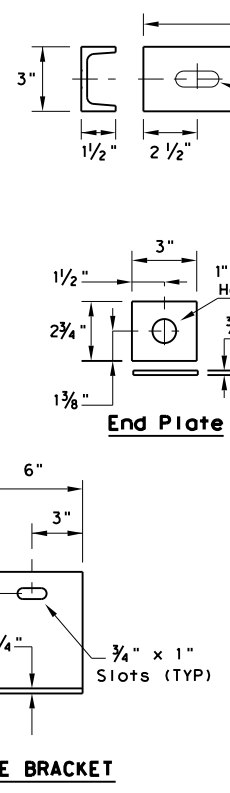
⑧ GUARDRAIL ANCHOR BRACKET



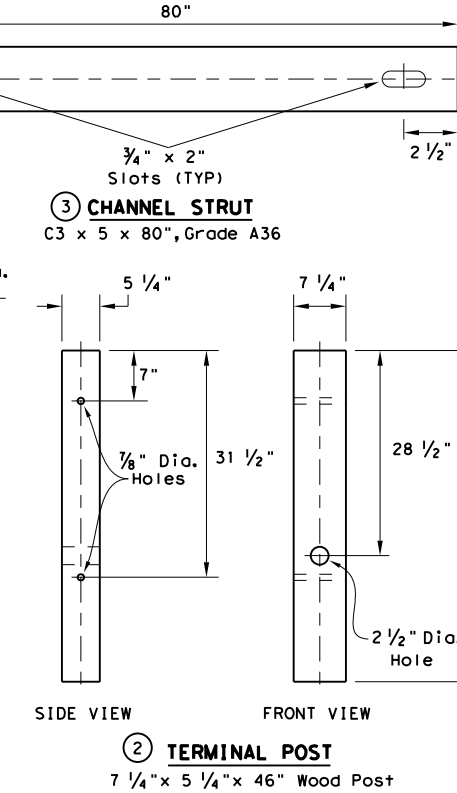
⑨ W-BEAM END SECTION (ROUNDED) (12 GA.)



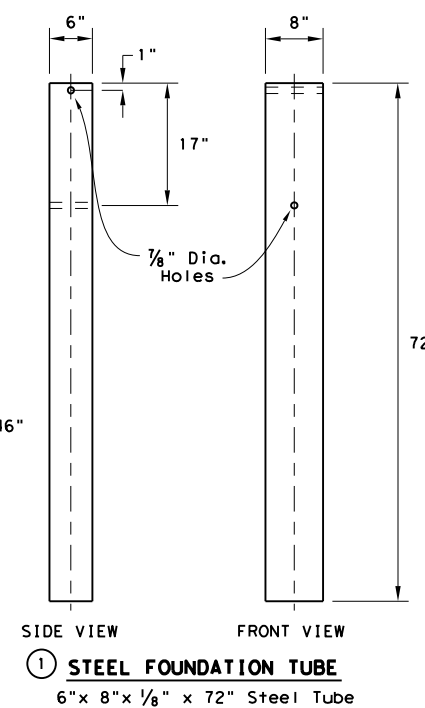
⑥ BEARING PLATE
 8" x 8" x 5/8" R



⑤ SHELF ANGLE BRACKET



② TERMINAL POST
 7 1/4" x 5 1/4" x 46" Wood Post



① STEEL FOUNDATION TUBE
 6" x 8" x 1/8" x 72" Steel Tube

#	(DAT) PARTS LIST	QTY
①	Steel Foundation Tube	2
②	DAT Terminal Post	2
③	Channel Strut	2
④	Terminal Rail Element	1
⑤	Shelf Angle Bracket	1
⑥	BCT Bearing Plate	1
⑦	BCT Post Sleeve	1
⑧	Guardrail Anchor Bracket	1
⑨	(Rounded) W-Beam End Section	1
⑩	BCT Cable Anchor	1
⑪	Recessed Nut, Guardrail	20
⑫	1 1/4" Button Head Bolt	4
⑬	10" Button Head Bolt	2
⑭	5/8" x 2" Hex Head Bolt	8
⑮	5/8" x 8" Hex Head Bolt	4
⑯	5/8" x 10" Hex Head Bolt	2
⑰	5/8" Flat Washer	18

Texas Department of Transportation
 Design Division Standard

METAL BEAM GUARD FENCE
 (Downstream Anchor Terminal)
GF (31) DAT-14

FILE: gf31dat14.dgn	DN: TxDOT	CK: AM	DW: VP	CK: CGL
© TxDOT: December 2011	CONT	SECT	JOB	HIGHWAY
REVISIONS	0697	02	039	SH 334
DIST	COUNTY	SHEET NO.		
TYL	HENDERSON			88