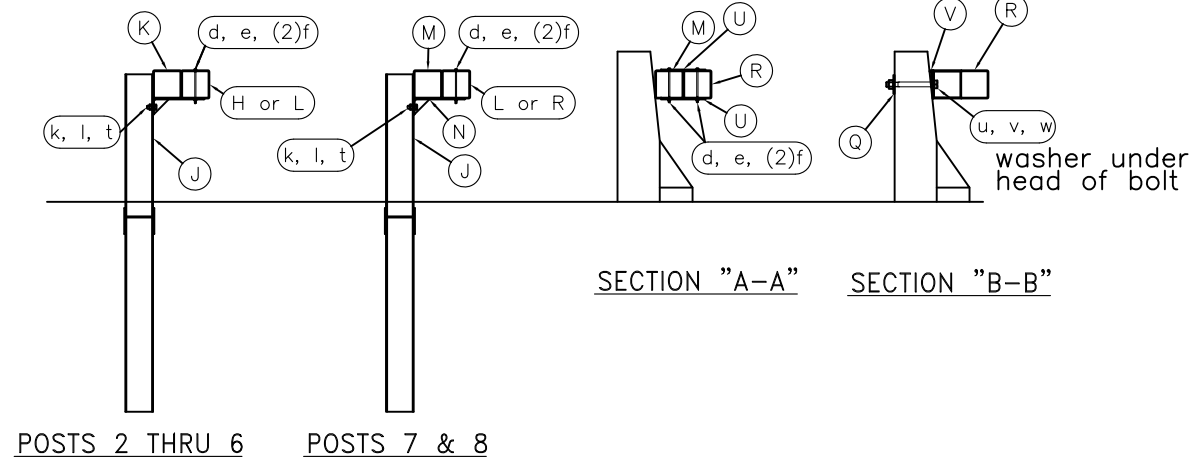


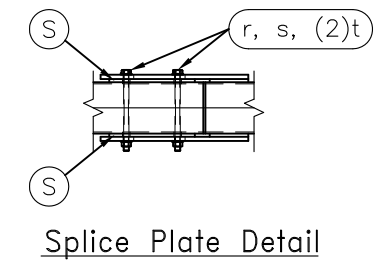
Impact Head Detail

General Notes for the BEAT-SSCC:

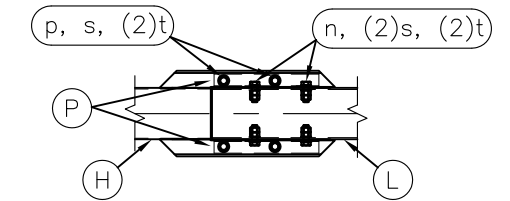
- 1) Unless otherwise noted, all hardware, cable assemblies, tubing, posts, impact heads and other steel components shall be galvanized.
- 2) The breakaway cable assembly must be taut. A locking device (vice grips or channel locks) should be used to prevent the cable from twisting when tightening nuts.
- 3) An object marker meeting State specifications should be installed on the front of the impact head.
- 4) The approach area in front of the BEAT-SSCC and the area within the system itself shall be free of fixed obstacles and have a fill slope or a cut slope of 10:1 or flatter.
- 5) Due to its single-sided design, the BEAT-SSCC is not appropriate for use at locations where backside hits towards the rigid concrete barrier are possible, e.g. in gore areas.
- 6) The connection of the BEAT-SSCC to the stationary rigid structure is critical to insure proper performance of the system. The length of the 1" bolts used to attach the system will vary with the wall structure and will need to be determined in the field.



POSTS 2 THRU 6 POSTS 7 & 8

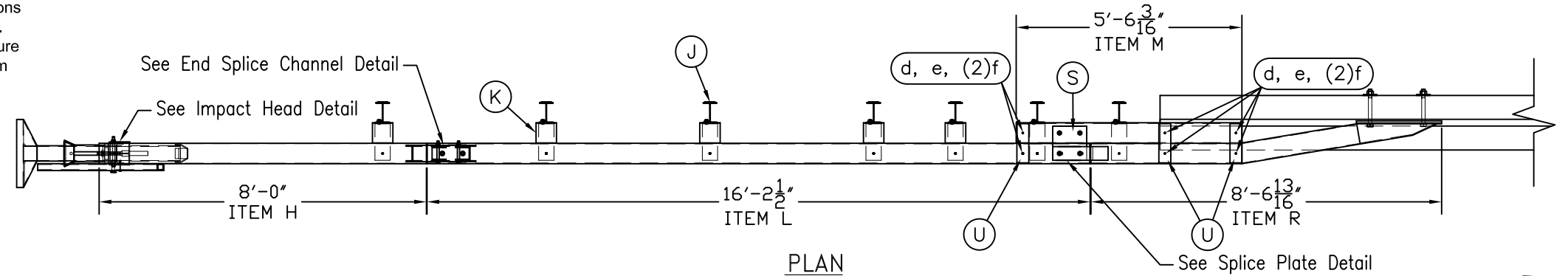


Splice Plate Detail

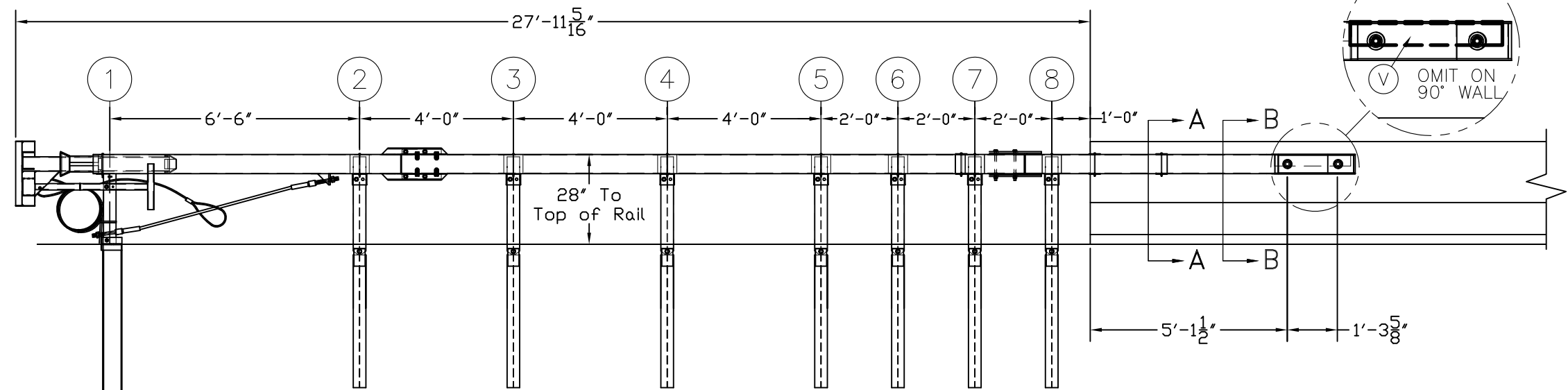


End Splice Channel Detail

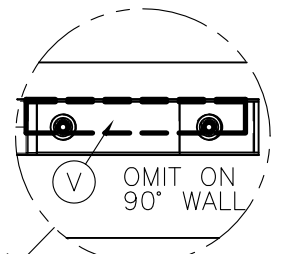
ITEM P Splice Channels will set on the top and bottom of ITEM L Second Rail. The bent plates welded to the end of ITEM H End Tube Rail will set on top of ITEM P Splice Channels.



PLAN



ELEVATION



OMIT ON 90° WALL

ITEM	QTY	DESCRIPTION	PART #
A	1	Box-Beam Impact Head	B3000
B	1	Upper End Post W6x9 x 1'-9 1/2" LG.	BEAT-UP
C	1	Lower End Post W6x15 x 8'-0" LG.	BEAT-LP
D	1	Support Bracket L4x2 x 4" LG.	BEAT-SB
E	1	Post Breaker Welded TS2x2x1/4"	BEAT-PB
F	1	Cable Anchor Assembly	E770
G	1	Cable Anchor Bearing Plate	E750
H	1	End Tube Rail TS6x6x1/8 x 8'-0" LG.	B-SS102
J	7	Steel Breakaway Line Post W6x9 x 6' LG.	PB621
K	5	Support Bracket w/ Blockout TS6x6 w/ Bent PL.	B-SS104
L	1	Second Rail x 16'-2 1/2" LG.	B-SS106
M	1	Transition Blockout x 5'-6 3/16" LG.	B-SS108
N	2	Trans. Support Bracket 3/16" Bent PL. w/ Gusset	B-SS110
P	2	Bent End Splice	BP-SC
Q	2	1" Square Washer PL. 4x4x1/4"	B-SS112
R	1	Anchor Rail x 8'-6 13/16" LG.	B-SS114
S	2	Splice Plate 10" x 10" x 3/8"	B-SS116
T	1	3/8" GALV. Cable x 20'-0"	C3820
U	6	Tie Plate PL. 11 1/2 x 3 1/2 x 3/16"	B-SS120
V	1	Spacer (OMIT ON 90° WALL)	B-SS122
HARDWARE			
a	1	1/4" x 3" Hex Bolt Grade 2	B140304
b	1	1/4" Hex Nut	N014
c	1	1/4" Washer	W014
d	14	5/16" x 7 1/2" Hex Bolt Grade 5	B51607504A
e	14	5/16" Hex Nut	N0516
f	28	5/16" Washer	W0516
g	1	1/2" x 2" Hex Bolt	B120204
h	1	1/2" x 5" Hex Bolt Grade 5	B120504A
i	2	1/2" Hex Nut	N012
j	2	1/2" Washer	W012
k	7	5/8" x 1 1/2" Hex Bolt	B580154
l	7	5/8" Recess Nut	N050
n	4	5/8" x 2" Hex Bolt Grade 5	B580204A
o	1	5/8" x 3" Hex Bolt Grade 5	B580304A
p	4	5/8" x 6" Hex Bolt Grade 5	B580604A
q	1	5/8" x 8" Hex Bolt Grade 5	B580804A
r	4	5/8" x 9" Hex Bolt Grade 5	B580904A
s	18	5/8" Hex Nut	N055
t	33	5/8" Washer	W050
u	2	1" x 16" Hex Bolt Grade 5 (Length Varies: see notes)	B101604A
v	4	1" Hex Nut Grade 5	N100A
w	4	1" Washer Grade 5	W100A
x	2	Cable Tie	CT100

<p>Big Spring, TX Phone: 432-263-2435 or Phone: 330-346-0721</p>	<p>BEAT-SSCC Single Sided Crash Cushion Assembly Drawing</p>		<p>Sheet: A1</p>
	<p>Drawing Name: BEAT-SSCC-RS</p>	<p>Scale: NONE</p>	<p>Date: 02/21/13</p>
		<p>By: JRR</p>	<p>Rev: A</p>