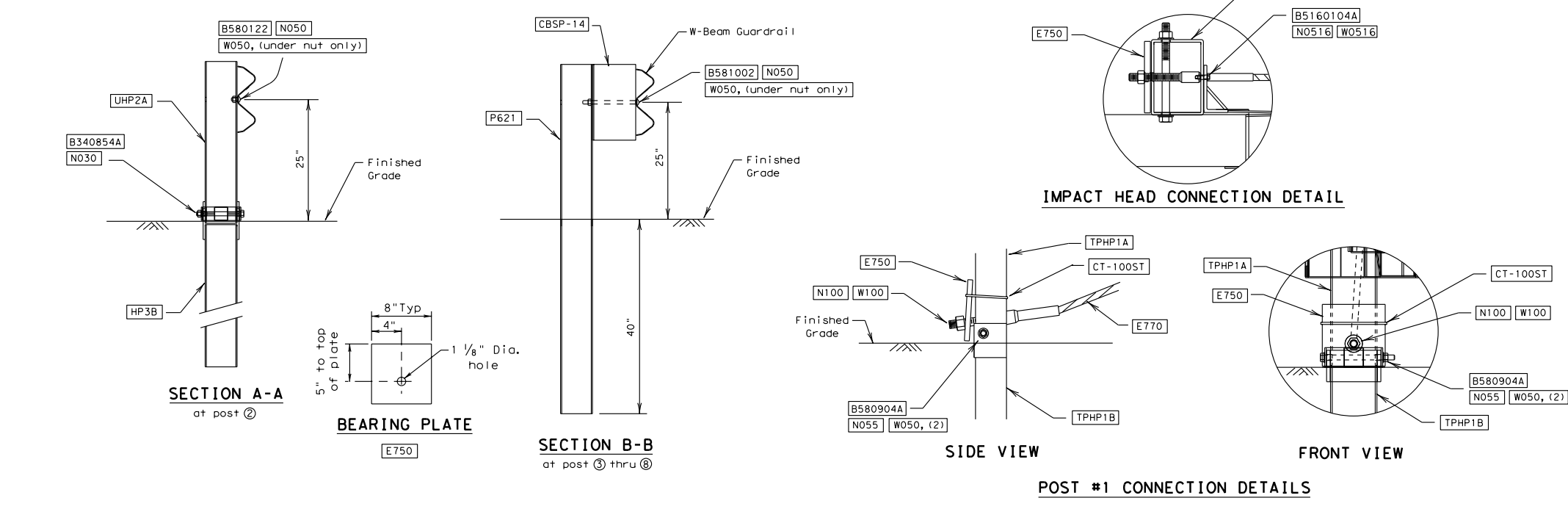
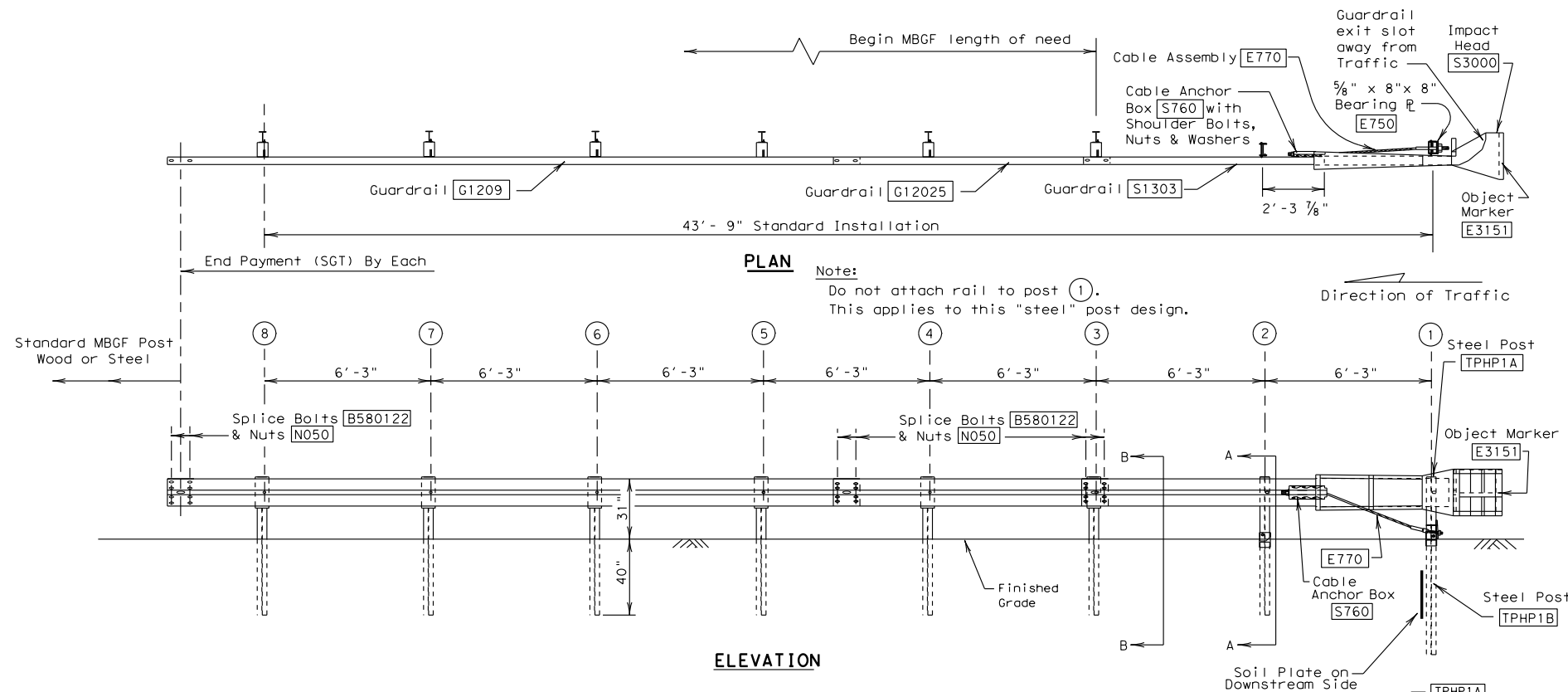


DISCLAIMER: The use of this standard is governed by the "Texas Engineering Practice Act". No warranty of any kind is made by TxDOT for any purpose whatsoever. TxDOT assumes no responsibility for the conversion of this standard to other formats or for incorrect results or damages resulting from its use.

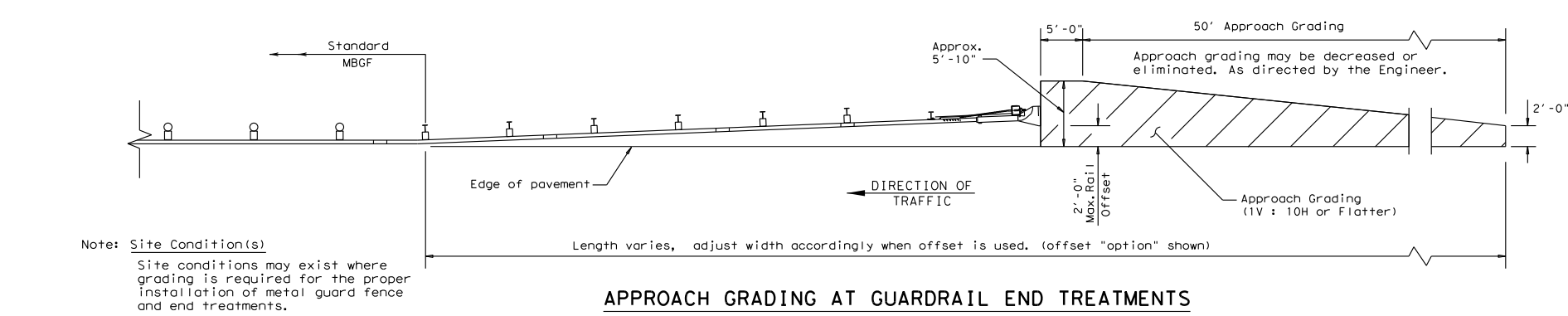
DATE: FILE:



**GENERAL NOTES**

- For additional information contact: Interstate Steel Inc., (432) 263-3725.
- All bolts, nuts cable assemblies, cable anchors, steel posts & bearing plates shall be galvanized.
- SGT's placed within the "minimum" 150 ft. radius, shall be installed straight. Standard rail elements may be installed within the radius without special fabrication.
- A flare rate of 25:1 may be used to prevent the terminal head from encroaching on the shoulder. The flare may be decreased or eliminated for specific installations, if directed by the Engineer.
- The lower sections of the post shall not protrude more than 4 inches above finished ground. Site grading may be necessary to meet this requirement.
- The lower section of the steel posts should not be driven with the upper post attached. If the post is placed in a drilled hole, the backfill material must be satisfactorily compacted to prevent settlement.
- If solid rock is encountered. See manufacturer's installation manual for the proper installation guidance.
- The breakaway cable assembly must be taut. A locking device, (vice grips or channel lock pliers) should be used to prevent the cable from twisting when tightening the nuts.
- Hinge bolts shall not be set below finished grade. At curb locations the posts shall be installed at the proper grade elevation behind the curb. The posts will then require field drilling new holes to accommodate the rail to post connection bolt to maintain the proper height of the rail above the gutter pan. The excess post length above the rail will be removed as directed by the Engineer.
- An object marker shall be installed on the front of the impact head as detailed on D&OM(VIA).

ITEM NO.	QTY	BILL OF MATERIALS
S1303	1	GUARDRAIL (12 GA) 12' - 6" SKT Panel
G12025	1	GUARDRAIL (12 GA) 9' - 4 1/2"
G1209	1	GUARDRAIL (12 GA) 25' - 0"
TPHP1A	1	FIRST POST ASSEMBLY TOP, TUBE
TPHP1B	1	FIRST POST ASSEMBLY BOTTOM, 6' - 0"
UHP2A	1	SECOND POST ASSEMBLY TOP
HP3B	1	SECOND POST ASSEMBLY BOTTOM, 3' - 5 1/8"
P621	6	STANDARD STEEL LINE POST 6' - 0" (POST 3 THRU 8)
E750	1	BEARING PLATE
S760	1	CABLE ANCHOR BOX
E770	1	BCT CABLE ANCHOR ASSEMBLY
CT-100ST	1	CABLE TIE - STEEL
Cbsp-14	6	ROUTED BLOCK
S3000	1	IMPACT HEAD
HARDWARE		
B580122	25	5/8" Dia. x 1 1/4" SPLICE BOLT
B580904A	1	5/8" Dia. x 9" HEX BOLT GR. 5
B340854A	1	3/4" Dia. x 8 1/2" HEX BOLT GR. 5
B581002	6	5/8" Dia. x 10" H.G.R. BOLT (Post 3 thru 8)
N055	1	5/8" Dia. HEX NUT (Post 1 only)
N050	31	5/8" Dia. H.G.R. NUT (at splices & at Post 2 thru 8)
W050	9	H.G.R. WASHER (At Post 1(2) & 2 thru 8)
N100	2	1" ANCHOR CABLE HEX NUT
W100	2	1" ANCHOR CABLE WASHER
B5160104A	2	5/16" x 1" HEX BOLT, GR. 5
N0516	2	5/16" HEX NUT
W0516	4	5/16" WASHER
SB12A	8	CABLE ANCHOR BOX SHOULDER BOLT
N030	1	3/4" HEX NUT
N012A	8	1/2" STR. NUT
W012A	8	1/2" STR. WASHER
E3151	1	OBJECT MARKER (18" x 18")



**APPROACH GRADING AT GUARDRAIL END TREATMENTS**

**Texas Department of Transportation** Design Division Standard

**SINGLE GUARDRAIL TERMINAL (SKT-31) (STEEL POST) SGT (8S) 31-14**

FILE: sg18s314.dgn	DN: TxDOT	CK: AM	DW: BD/VP	CK: VP
© TxDOT December 2011		CONT	SECT	JOB
REVISIONS				
DIST	COUNTY	SHEET NO.		