

Interstate Steel

Product Guide



BEAT-SSCC



BEAT-SSCC Bill of Materials

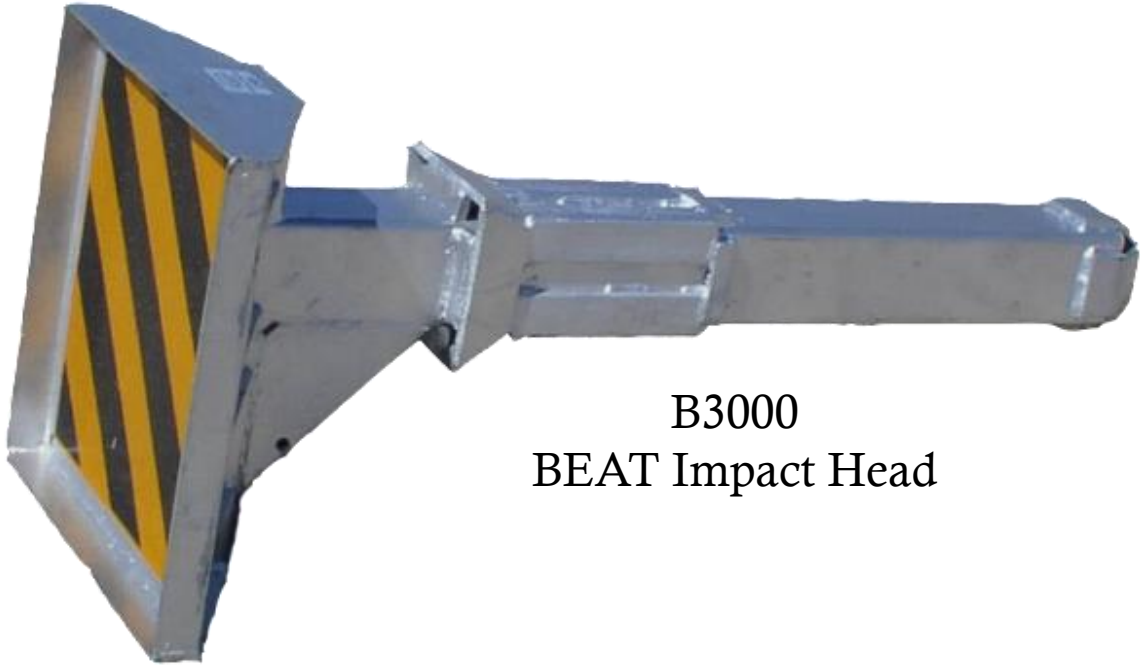
BEAT Single Sided Crash Cushion		
B3000	1	BEAT Impact Head
E3151	1	Object Marker
BEAT-UP	1	Upper End Post W6x9 x 1'-9 1/2" LG.
BEAT-LP	1	Lower End Post W6x15 x 8'0" LG.
BEAT-SB	1	Support Bracket 10ga.bent plate
BEAT-PB	1	Post Breaker
E770	1	Cable Assembly
E750	1	Bearing Plate - 5/8" x 8" x 8"
B-SS102	1	End Tube Rail TS 6x6x1/8 x 8'-0" LG.
PB621	7	Steel Breakaway Line Post
B-SS104	5	Support Bracket with Blockout TS 6x6x3/16 w/bent plate
B-SS106	1	Second Rail TS 6x6x3/16 x 16'-2 1/2" LG.
B-SS108	1	Transition Blockout TS 6x6x3/16--5'-6"
B-SS110	2	Transition Support Bracket 3/16" bent plate w/ gusset
BP-SC	2	End Section Splice Channel
B-SS112	2	1" Square Washer 4x4x1/4"
B-SS114	1	Anchor Rail TS 6x6x3/16--8'-6 13/16" LG.
B-SS116	2	Splice Plate 10x10x3/8" plate
C3820	1	3/8 galvanized cable x 20'
B-SS120	6	Tie Plate 11 1/2 x 3 1/2 x 3/16" plate
B-SS122	1	Spacer

Hardware continued on next page.

BEAT-SSCC Bill of Materials

Hardware		
B5160704A	14	5/16" X 7" Hex Head Bolt Gr.5
B140304	1	1/4" X 3" Hex Head Bolt Gr. 2
B120204	1	1/2" X 2" Hex Head Bolt
B120504A	1	1/2" X 5" Hex Head Bolt Gr.5
B580154	7	5/8" X 1 1/2" Hex Head Bolt Gr.2
B580204A	4	5/8" X 2" Hex Head Bolt Gr.5
B580304A	1	5/8" X 3" Hex Head Bolt Gr.5
B580604A	4	5/8" x 6" Hex Head Bolt Gr. 5
B580804A	1	5/8" X 8" Hex Head Bolt Gr.5
B580904A	4	5/8" X 9" Hex Head Bolt Gr.5
B101604A	2	1" x 16 Hex Head Bolt GR.5
N0516	14	5/16" Hex Nut
N014	1	1/4" Hex Nut
N012	2	1/2" Hex Nut
N050	7	5/8" DR NUT
N055	18	5/8" Hex Nut
N100A	4	1" Heavy Hex Nut Gr. 5
W0516	28	5/16" Washer
W014	1	1/4" Washer
W012	2	1/2" Washer
W050	33	5/8" Washer
W100A	4	1" Heave Washer Gr. 5
CT-100 ST	2	Cable Tie – Steel

BEAT-SSCC Parts



B3000
BEAT Impact Head

E3151
Object Marker
18" x 18"



BEAT-SSCC Parts



B-SS114
Anchor Rail
6 x 6 x 3/16 x 8'-6 13/16"



B-SS102
End Tube Rail
6" x 6" x 1/8" x 8'



PB621
Steel Breakaway Post (Plugweld)

BEAT-SSCC Parts



B-SS106
Second Rail
6 x 6 x 3/16" 2 1/2"

B-SS108
Transition Blockout
6 x 6 x 3/16 x 8'



BEAT-UP
Upper End Post
W6 x 9 x 1'9 1/2"

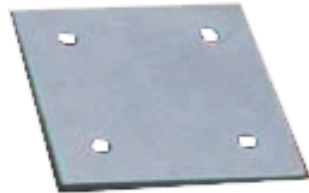
BEAT-LP
Lower End Post
W6 x 15 x 8'



BEAT-SSCC Parts



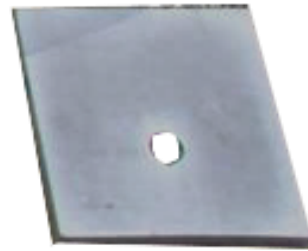
B-SS122
Spacer



B-SS116
Splice Plate



B-SS120
Tie Plate



E750
Bearing Plate



BEAT-SB
Support Bracket



B-SS112
1" Square Washer
4 x 4 x 1/4"

BEAT-SSCC Parts

E770
Cable Assembly



C3820
3/8" Galvanized Cable



BEAT-PB
Post Breaker



B-SS110
Transition Support
Bracket



B-SS104
Support Bracket
with Blockout



BEAT-TIEPL
End Section Tie Plate



Contact Us



If you have any questions or need to place an order, don't hesitate to contact our office.

**Kothmann Enterprises
DBA Interstate Steel
3616 Old H.C. Airport Road
Big Spring, TX 79720**

Phone: (432) 263-3725

Fax: (432) 267-4039

Email: info@interstatesteeltexas.com

www.interstatesteeltexas.com